











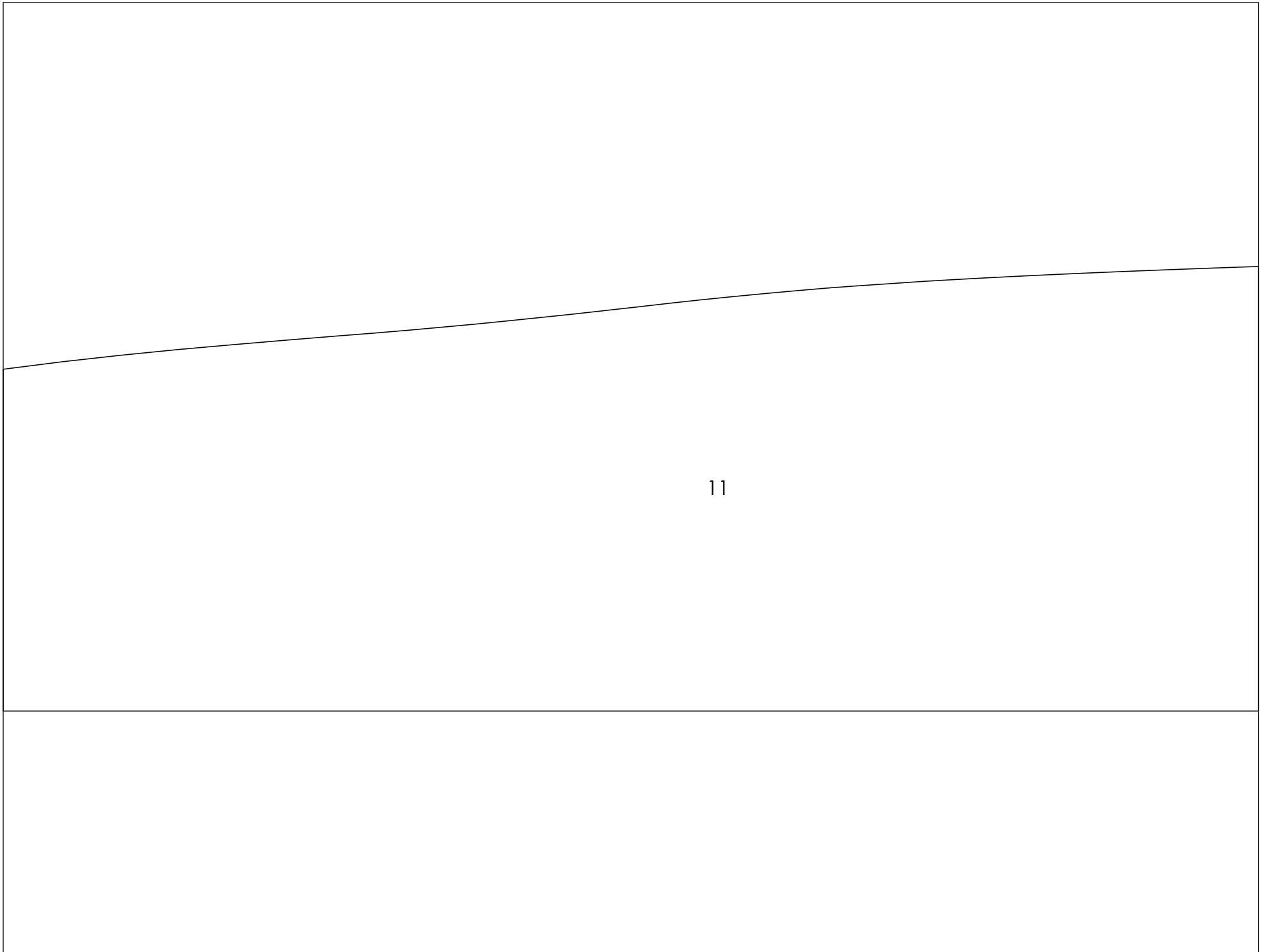






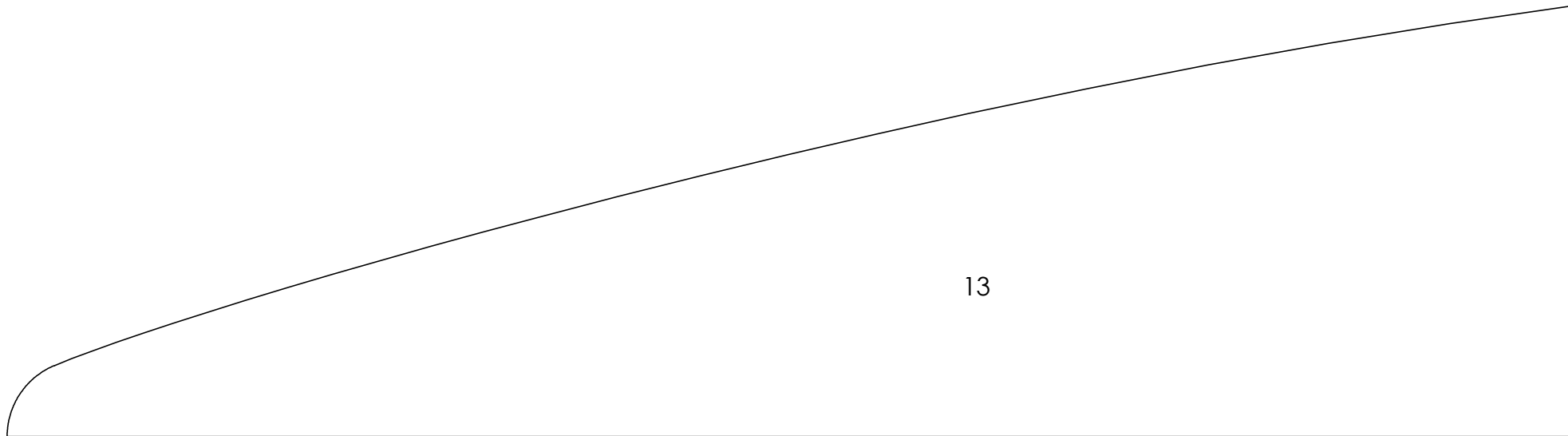


10

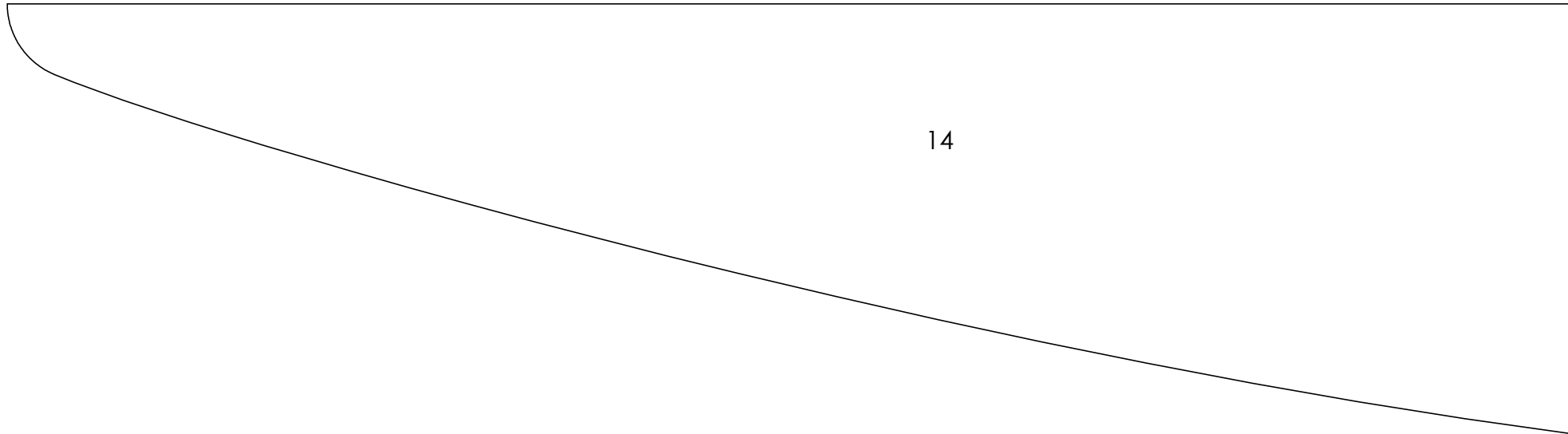


11

12



13



14

13	11	9	7	5	3	1	
14	12	10	8	6	4	2	

The diagram consists of a 4x7 grid. The second row contains the numbers 13, 11, 9, 7, 5, 3, and 1 from left to right. The third row contains the numbers 14, 12, 10, 8, 6, 4, and 2 from left to right. Two curved lines originate from the left edge of the grid, between the second and third rows. The upper curve connects the number 13 to 11, 11 to 9, 9 to 7, 7 to 5, 5 to 3, and 3 to 1. The lower curve connects the number 14 to 12, 12 to 10, 10 to 8, 8 to 6, 6 to 4, and 4 to 2. The lines are symmetric about the horizontal center of the grid.